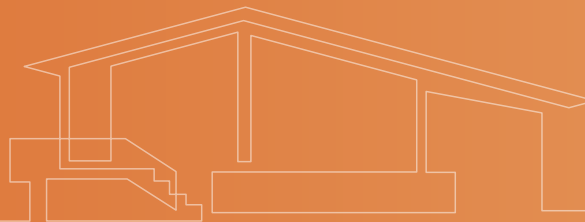




Capsule Home

Mobile Home

Apple Cabin / Space Capsule
Modular House





Capsule Home

About Us

Capsule Home commercialise des habitats compacts nouvelle génération, alliant design, fonctionnalité et durabilité.

Nos tiny houses et capsules sont conçues pour offrir confort, liberté et qualité de vie dans un espace optimisé.



PRODUCTCORE COMPETITIVENESS

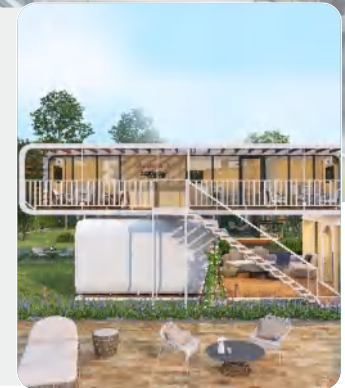
Unrestricted by Terrain Eco-Friendly Development

It requires no foundation, adapts to all terrains, and is an eco-friendly solution that avoids ecological damage and construction waste.



Fully Prefabricated for Rapid Installation

The house is built with eco-friendly materials and has been tested for waterproofing, thermal insulation, and heat resistance. All materials comply with international standards.



Four Core Advantages

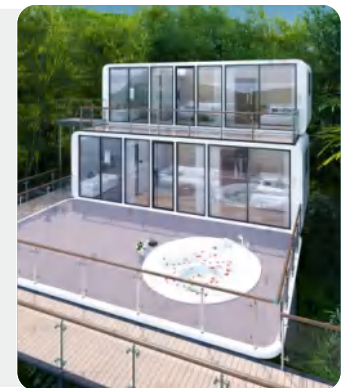
Sleek, Modern Technology With A Premium Exterior

It comes with a fully integrated smart home system, a forward-thinking design that offers panoramic views, and inherent crowd-pulling appeal.



Easy Assembly & Disassembly Flexible Land Use

It is transported as a complete unit and requires only the assembly and disassembly of modular components. This solution is suitable for a wide range of sites with minimal restrictions.

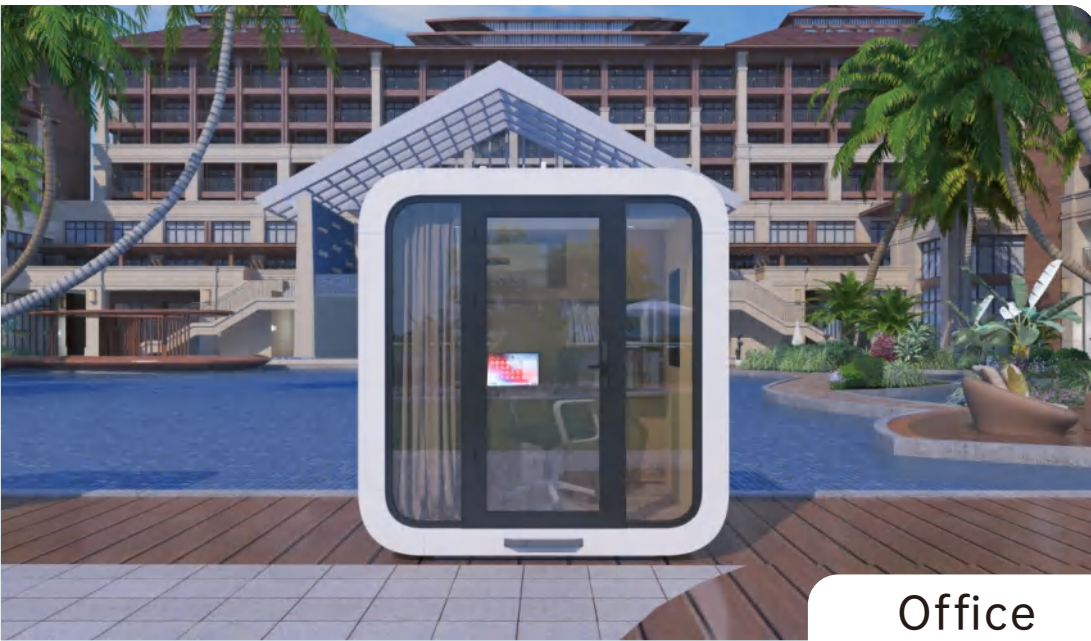




Mobile Home

Apple Cabin Series

Apple Cabin A2 Series



Office



Meeting Room



Apple Cabin A3 Series



Barbershop



Accommodation Capsule



Apple Cabin K5 Series

Parameter

House Type: One Bedroom, One Bathroom

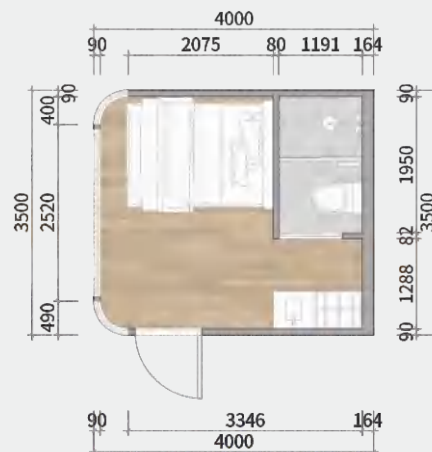
Construction Area: 14m²

Building Dimensions: 4(L)*3.5(W)*3.2(H)m

Interior Dimensions: 3.75(L)*3.32(W)*2.9(H)m



Architectural Floor Plan



Apple Cabin K5 Series



Exterior Styling



Apple Cabin A6 Series

Parameter

House Type: One Bedroom, One Bathroom

Construction Area: 18m²

Building Dimensions: 5.8(L)*3(W)*2.8(H)m

Interior Dimensions: 5.65(L)*2.82(W)*2.5(H)m



Architectural Floor Plan



Apple Cabin A6 Series



Exterior Styling



Apple Cabin A6 Series



Interior Design



Apple Cabin A6s Series

Parameter

House Type: One Bedroom, One Bathroom

Construction Area: 13m²

Building Dimensions: 5.8(L)*2.25(W)*2.45(H)m

Interior Dimensions: 5.62(L)*2.07(W)*2.11(H)m



Architectural Floor Plan



Apple Cabin A6s Series



Exterior Styling



Apple Cabin A6s Series



Interior Design



Apple Cabin A6s Dual-Combination Series



Exterior Styling



Apple Cabin A6s Dual-Combination Series



Interior Design



Apple Cabin A9 Series

Parameter

House Type: One Bedroom, One Livingroom,
One Bathroom

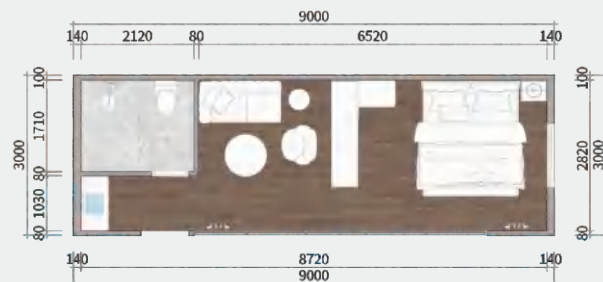
Construction Area: 27m²

Building Dimensions: 9(L)*3(W)*2.8(H)m

Interior Dimensions: 8.72(L)*2.82(W)*2.5(H)m



Architectural Floor Plan



Apple Cabin A9 Series



Exterior Styling



Apple Cabin A9 Series



Interior Design



Apple Cabin A9s Series

Parameter

House Type: One Bedroom, One Livingroom,
One Bathroom

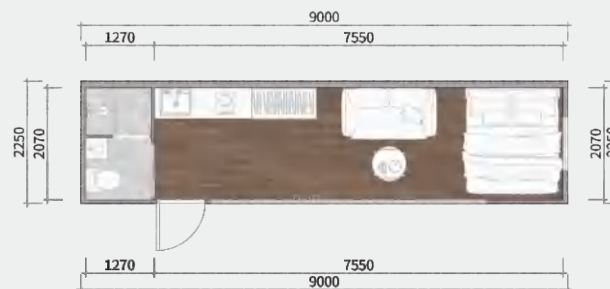
Construction Area: 20m²

Building Dimensions: 9(L)*2.25(W)*2.45(H)m

Interior Dimensions: 8.82(L)*2.07(W)*2.11(H)m



Architectural Floor Plan



Apple Cabin A9s Series



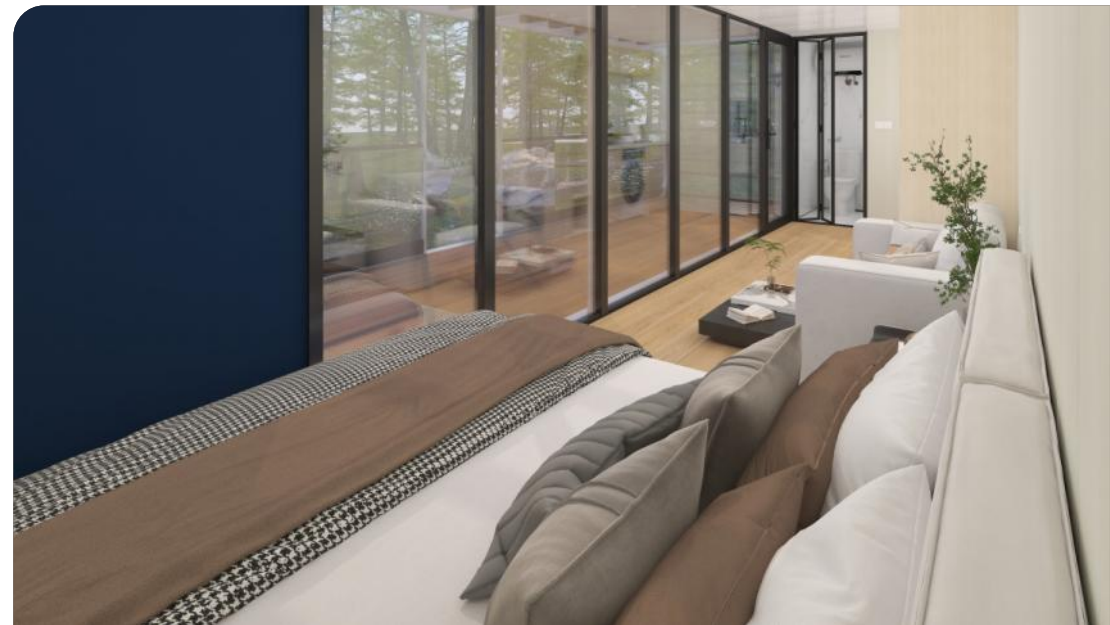
Exterior Styling



Apple Cabin A9s Series



Interior Design



Apple Cabin A9s Dual-Combination Series

Parameter

House Type: One Bedroom, One Livingroom,
One Bathroom, One Patio

Construction Area: 60m²

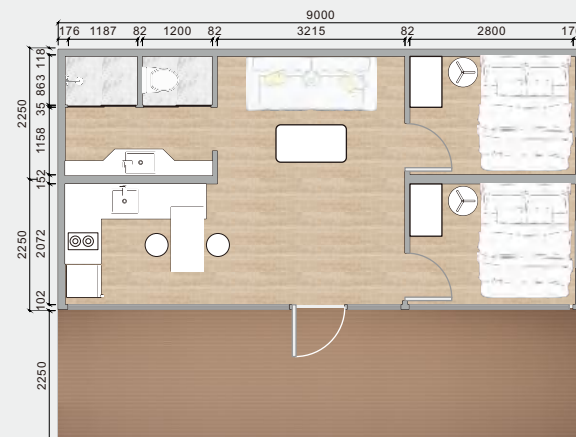
Building Dimensions: 9(L)*4.5(W)*2.45(H)m

Patio Dimensions: 9(L)*2.25(W)m

Interior Dimensions: 8.65(L)*4.28(W)*2.11(H)m



Architectural Floor Plan



Apple Cabin A9s Dual-Combination Series



Exterior Styling



Apple Cabin A9s Dual-Combination Series



Interior Design



Apple Cabin A12 Series

Parameter

House Type: One Bedroom, One Livingroom,
One Bathroom

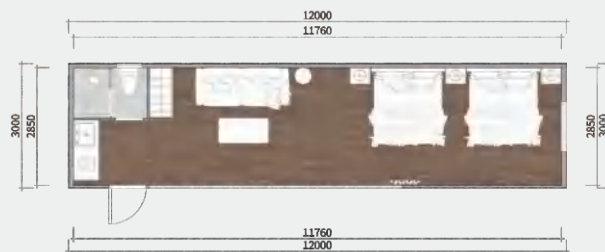
Construction Area: 36m²

Building Dimensions: 12(L)*3(W)*2.8(H)m

Interior Dimensions: 11.76(L)*2.82(W)*2.5(H)m



Architectural Floor Plan



Apple Cabin A12 Series



Exterior Styling



Apple Cabin A12 Series



Interior Design



Apple Cabin A12s Series

Parameter

House Type: One Bedroom, One Livingroom,
One Bathroom

Construction Area: 26m²

Building Dimensions: 11.6(L)*2.25(W)*2.45(H)m

Interior Dimensions: 11.42(L)*2.07(W)*2.11(H)m



Architectural Floor Plan



Apple Cabin A12s Series



Exterior Styling



Apple Cabin A12s Series



Interior Design



Apple Cabin A12s Dual-Combination Series

Parameter

House Type: One Bedroom, One Livingroom,

One Bathroom, One Patio

Construction Area: 70m²

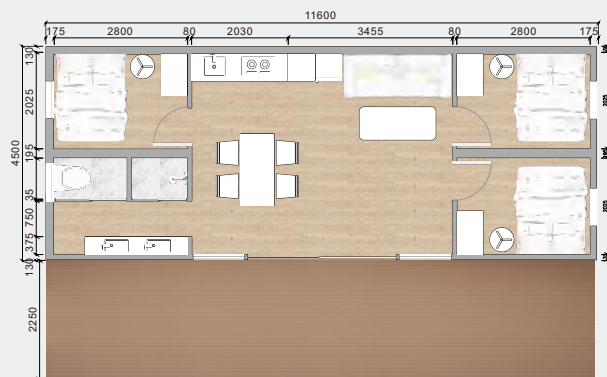
Building Dimensions: 11.6(L)*4.5(W)*2.45(H)m

Patio Dimensions: 9(L)*2.25(W)m

Interior Dimensions: 11.42(L)*4.24(W)*2.11(H)m



Architectural Floor Plan



Apple Cabin A12s Dual-Combination Series



Exterior Styling



Apple Cabin A12s Dual-Combination Series



Interior Design



Apple Cabin A6s & A12s Combination Series

Parameter

House Type: Three Bedrooms, Two Livingrooms,

Two Bathrooms, Two Patios

Construction Area: 98m²

The First Floor Building Dimensions (Including Platform):

5.8(L)*7.89(W)*2.45(H)m

The First Floor Interior Dimensions (Excluding Platform):

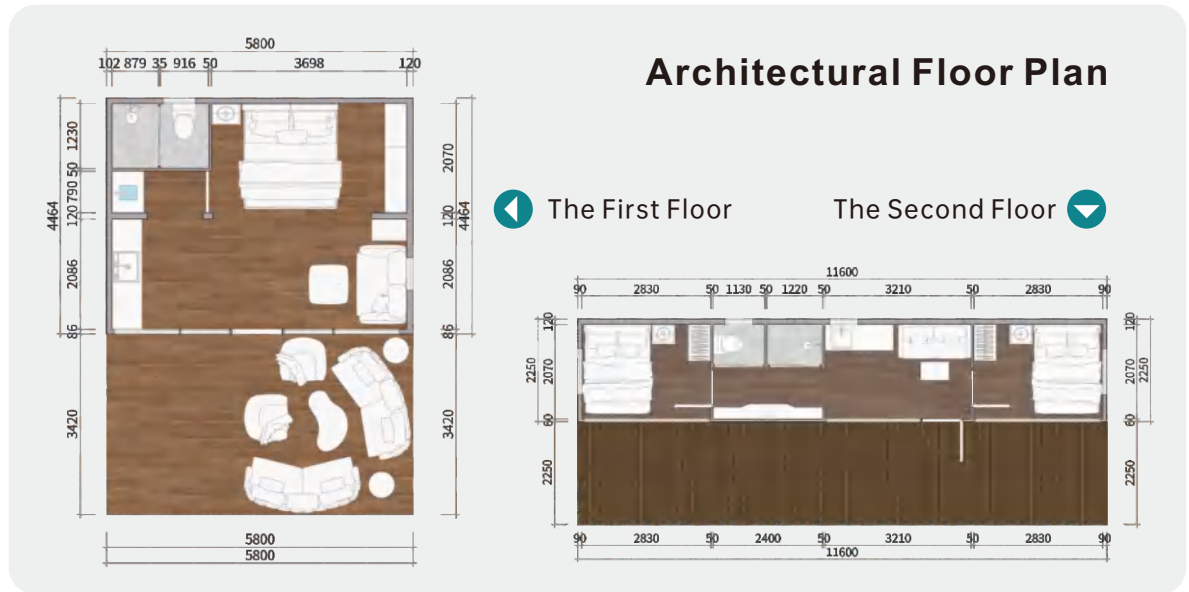
5.58(L)*4.28(W)*2.11(H)m

The Second Floor Building Dimensions (Including Platform):

11.6(L)*4.5(W)*2.45(H)m

The Second Floor Interior Dimensions (Excluding Platform):

11.42(L)*2.07(W)*2.11(H)m



Apple Cabin A6s & A12s Combination Series



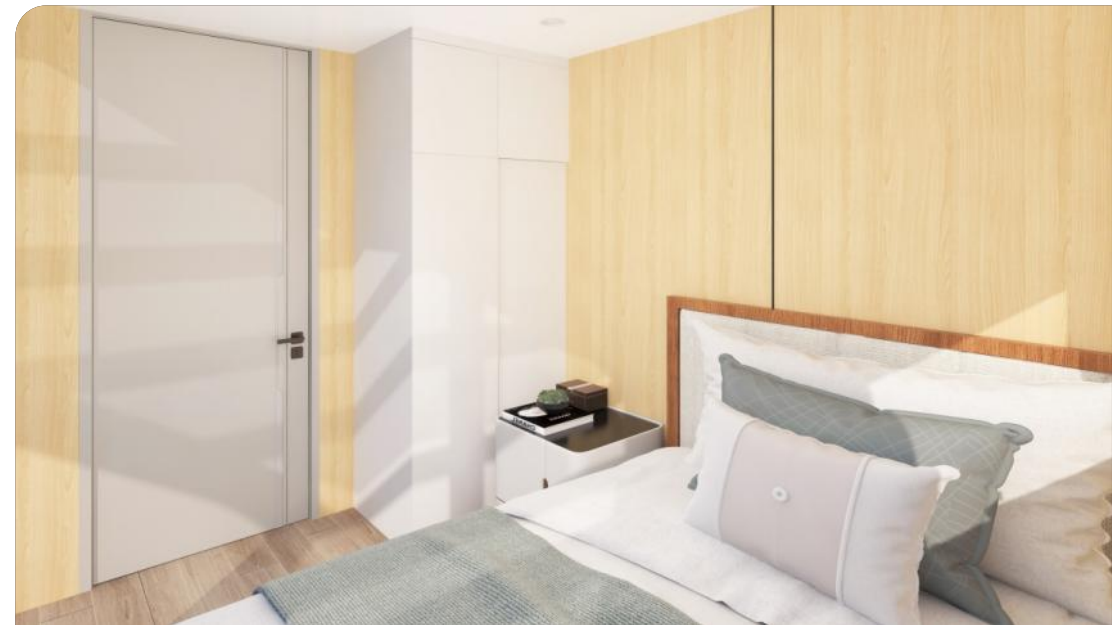
Exterior Styling



Apple Cabin A6s & A12s Combination Series



Interior Design





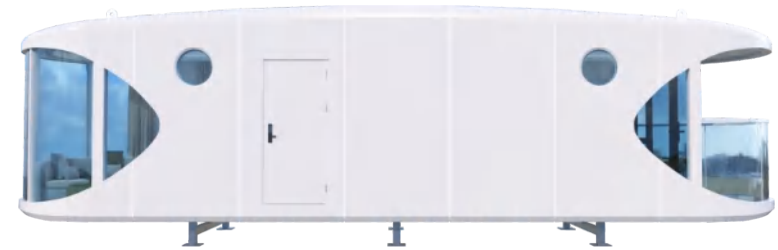
Mobile Home

Space Capsule Series

R7 Shark Chamber Series



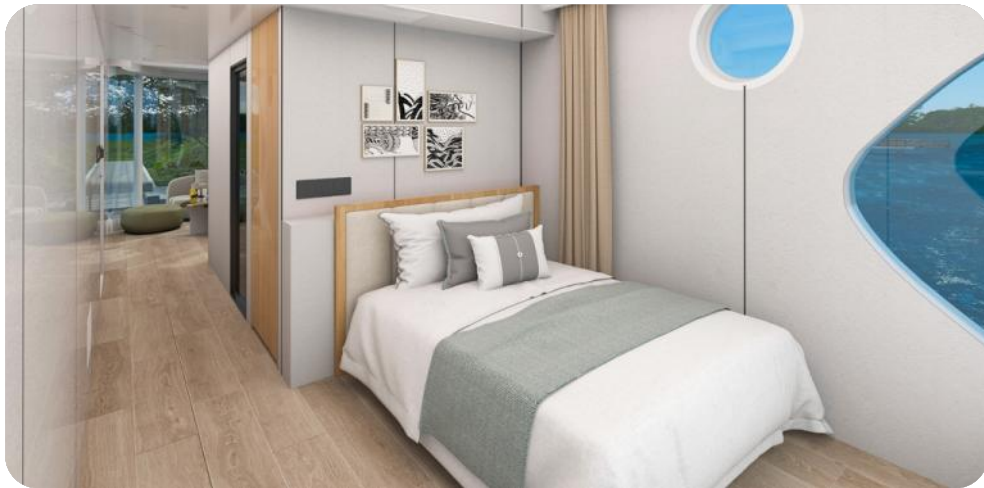
Exterior Styling



R7 Shark Chamber Series



Interior Design



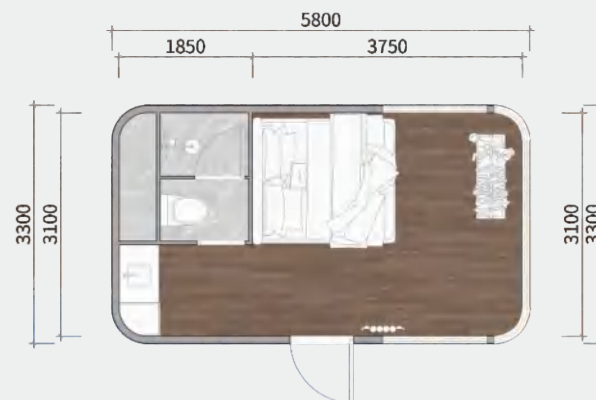
N3 Space Capsule Series

Parameter

House Type: One Bedroom, One Bathroom
Construction Area: 19.14m²
Building Dimensions: 5.8(L)*3.3(W)*3.2(H)m
Interior Dimensions: 5.6(L)*3.1(W)*2.6(H)m



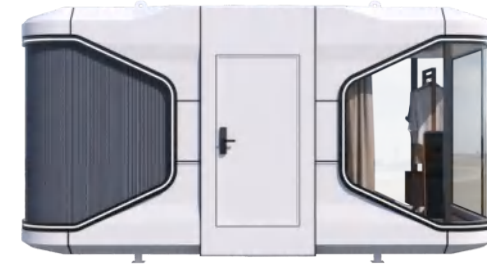
Architectural Floor Plan



N3 Space Capsule Series



Exterior Styling



N3 Space Capsule Series



Interior Design



N5 Space Capsule Series



Exterior Styling



N5 Space Capsule Series



Interior Design



N7 Space Capsule Series

Parameter

House Type: One Bedroom, One Livingroom,
One Bathroom

Construction Area: 38m²

Building Dimensions: 11.5(L)*3.3(W)*3.2(H)m

Interior Dimensions: 11.3(L)*3.07(W)*2.6(H)m



Architectural Floor Plan



N7 Space Capsule Series



Exterior Styling



N7 Space Capsule Series



Interior Design



N7+ Space Capsule Series

Parameter

House Type: One Bedroom, One Livingroom,
One Bathroom

Construction Area: 38m²

Building Dimensions: 11.5(L)*3.3(W)*3.2(H)m

Interior Dimensions: 11.3(L)*3.07(W)*2.6(H)m



Architectural Floor Plan



N7+ Space Capsule Series



Exterior Styling



N7+ Space Capsule Series



Interior Design



L7 Space Capsule Series

Parameter

House Type: One Bedroom(Twin Beds), One Livingroom, One Bathroom

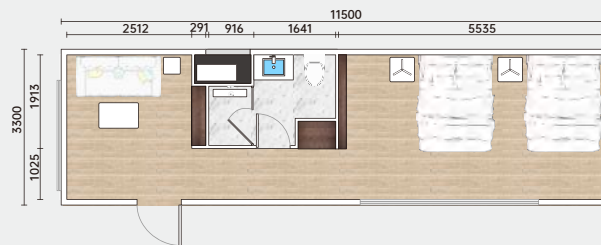
Construction Area: 38m²

Building Dimensions: 11.5(L)*3.3(W)*3.2(H)m

Interior Dimensions: 11.3(L)*3.07(W)*2.6(H)m



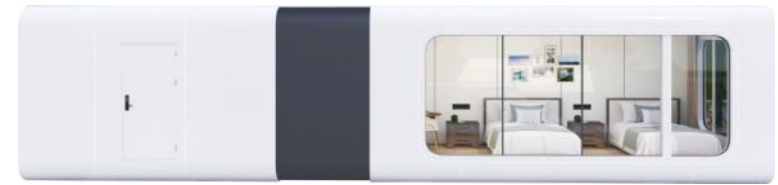
Architectural Floor Plan



L7 Space Capsule Series



Exterior Styling



L7 Space Capsule Series



Interior Design



M3/M5 Space Capsule Series

M3 Parameter

House Type: One Bedroom,
One Bathroom
Construction Area: 38m²
Building Dimensions:
11.5(L)*3.3(W)*3.2(H)m

M5 Parameter

House Type: One Bedroom, One
Livingroom, One Bathroom
Construction Area: 22.5m²
Building Dimensions:
7.5(L)*3(W)*3.2(H)m



Architectural Floor Plan

M3 Floor Plan



M5 Floor Plan



M3/M5 Space Capsule Series



Exterior Styling



M3



M5



M3/M5 Space Capsule Series



Interior Design



X3/X5 Space Capsule Series

X3 Parameter

House Type: One Bedroom,
One Bathroom
Construction Area: 22m²
Building Dimensions:
6.6(L)*3.5(W)*3.2(H)m

X3 Parameter

House Type: One Bedroom,
One Bathroom
Construction Area: 26m²
Building Dimensions:
7.8(L)*3.3(W)*3.2(H)m



Architectural Floor Plan

X3 Floor Plan



X5 Floor Plan



X3/X5 Space Capsule Series



Exterior Styling



X3



X5





Mobile Home

Modular House Series

Modular House MG3-23 Series

Parameter

House Type: One Bedroom, One Bathroom

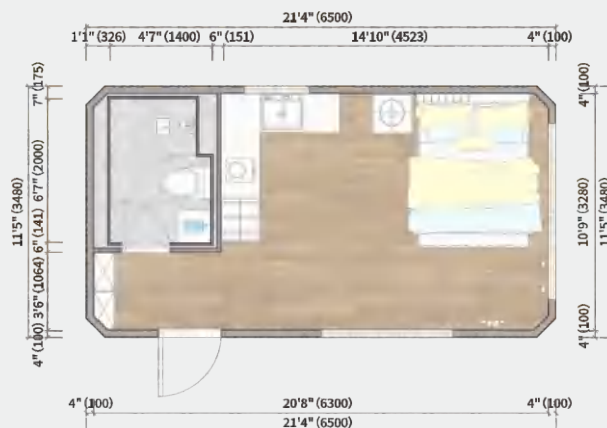
Construction Area: 23m²

Building Dimensions: 6.5(L)*3.48(W)*3.3(H)m

Interior Dimensions: 6.3(L)*3.28(W)*2.6(H)m



Architectural Floor Plan



Modular House MG3-23 Series



Exterior Styling



Modular House MG3-23 Series



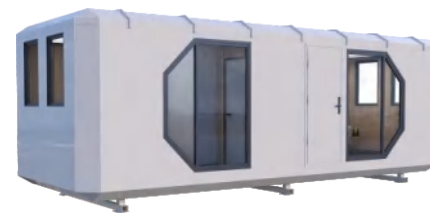
Interior Design



Modular House MG3-31A Series



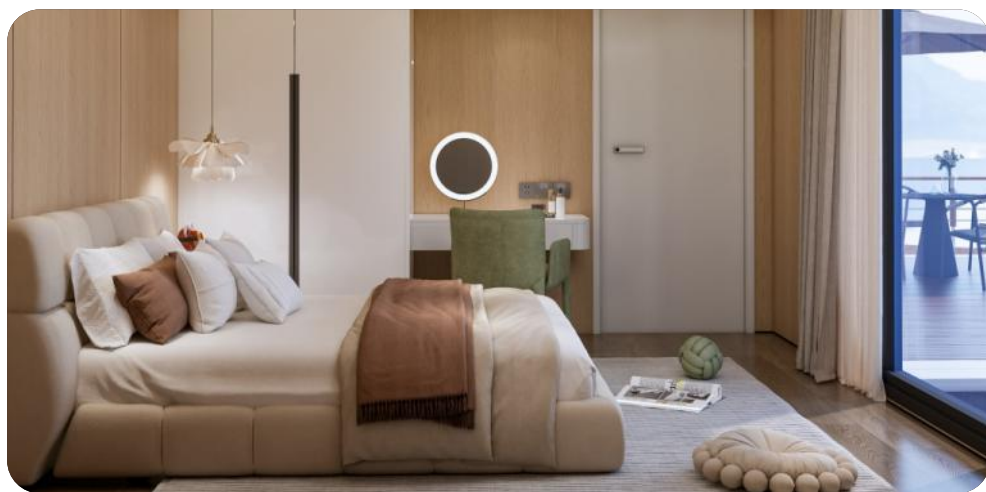
Exterior Styling



Modular House MG3-31A Series



Interior Design



Modular House MG3-31B Series

Parameter

House Type: One Bedroom, One Livingroom,
One Bathroom

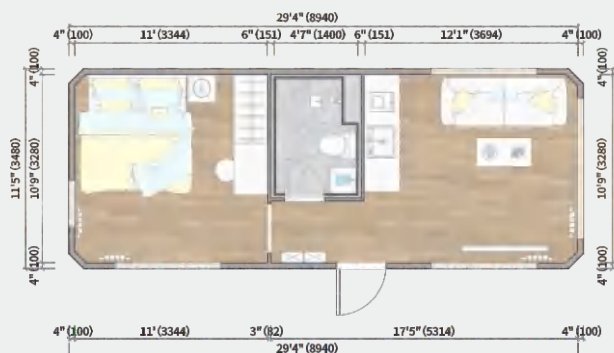
Construction Area: 31.11m²

Building Dimensions: 8.94(L)*3.48(W)*3.3(H)m

Interior Dimensions: 8.74(L)*3.28(W)*2.6(H)m



Architectural Floor Plan



Modular House MG3-31B Series



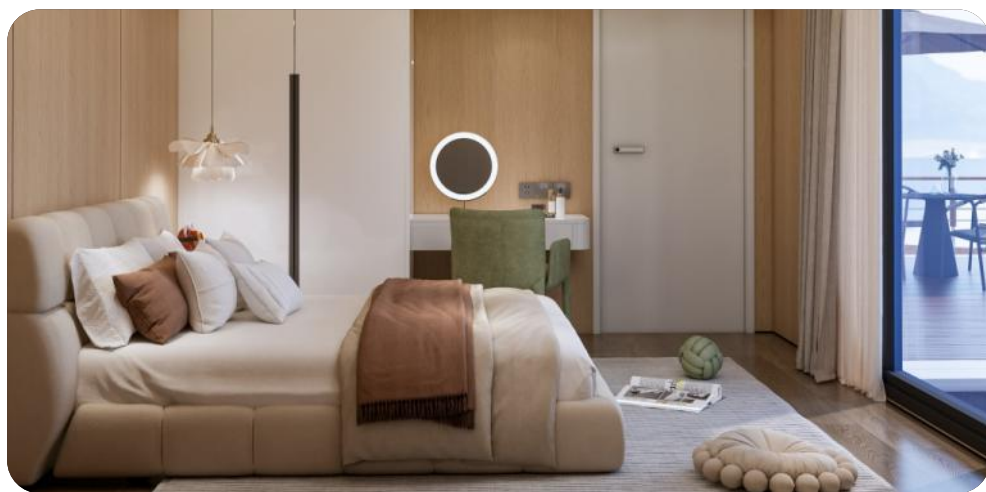
Exterior Styling



Modular House MG3-31B Series



Interior Design



Modular House MG3-40A Series

Parameter

House Type: One Bedroom, One Livingroom,
One Bathroom

Construction Area: 39.11m²

Building Dimensions: 11.38(L)*3.48(W)*3.3(H)m

Interior Dimensions: 11.18(L)*3.28(W)*2.6(H)m



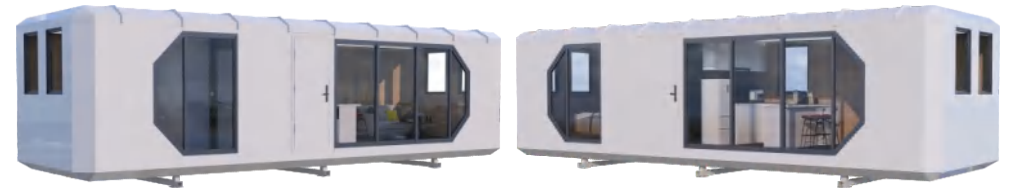
Architectural Floor Plan



Modular House MG3-40A Series



Exterior Styling



Modular House MG3-40A Series



Interior Design



Modular House MG3-40B Series

Parameter

House Type: One Bedroom, One Livingroom,
One Bathroom

Construction Area: 39.11m²

Building Dimensions: 11.38(L)*3.48(W)*3.3(H)m

Interior Dimensions: 11.18(L)*3.28(W)*2.6(H)m



Architectural Floor Plan



Modular House MG3-40B Series



Exterior Styling



Modular House MG3-40B Series



Interior Design



Modular House MG3-48 Series

Parameter

House Type: Two Bedrooms, One Livingroom,
One Bathroom

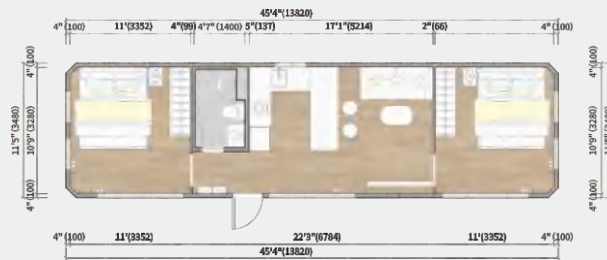
Construction Area: 48.09m²

Building Dimensions: 13.84(L)*3.48(W)*3.3(H)m

Interior Dimensions: 13.64(L)*3.28(W)*2.6(H)m



Architectural Floor Plan



Modular House MG3-48 Series



Exterior Styling



Modular House MG3-48 Series



Interior Design



Modular House MH7-23 Series

Parameter

House Type: One Bedroom, One Bathroom

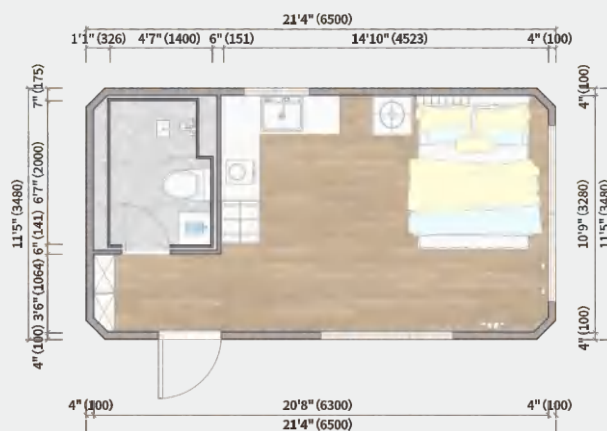
Construction Area: 23m²

Building Dimensions: 6.5(L)*3.48(W)*3.2(H)m

Interior Dimensions: 6.3(L)*3.28(W)*2.6(H)m



Architectural Floor Plan



Modular House MH7-23 Series



Exterior Styling



Modular House MH7-23 Series



Interior Design



Modular House MH7-31 Series

Parameter

House Type: One Bedroom, One Livingroom,
One Bathroom

Construction Area: 31.11m²

Building Dimensions: 8.94(L)*3.48(W)*3.2(H)m

Interior Dimensions: 8.74(L)*3.28(W)*2.6(H)m



Architectural Floor Plan



Modular House MH7-31 Series



Exterior Styling



Modular House MH7-31 Series



Interior Design



Modular House MH7-40 Series

Parameter

House Type: One Bedroom, One Livingroom,
One Bathroom

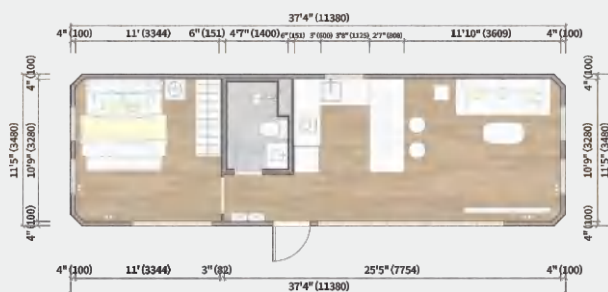
Construction Area: 39.11m²

Building Dimensions: 11.38(L)*3.48(W)*3.2(H)m

Interior Dimensions: 11.18(L)*3.28(W)*2.6(H)m



Architectural Floor Plan



Modular House MH7-40 Series



Exterior Styling



Modular House MH7-40 Series



Interior Design



Modular House MH7-48 Series

Parameter

House Type: Two Bedrooms, One Livingroom,
One Bathroom

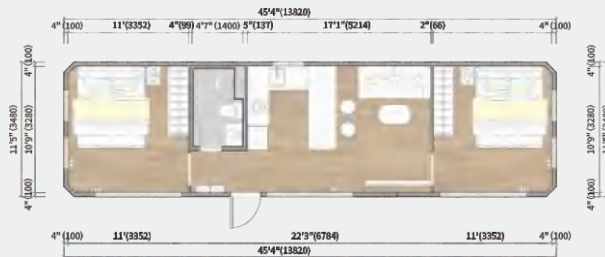
Construction Area: 48.09m²

Building Dimensions: 13.84(L)*3.48(W)*3.2(H)m

Interior Dimensions: 13.64(L)*3.28(W)*2.6(H)m



Architectural Floor Plan



Modular House MH7-48 Series



Exterior Styling



Modular House MH7-48 Series



Interior Design



Modular House Combination Model

Parameter

House Type: Three Bedrooms, Two Bathrooms,
One Patio

Construction Area: 83.17m²

MH7-40 Building Dimensions:

11.38(L)*3.48(W)*3.2(H)m

Interior Dimensions: 11.18(L)*3.28(W)*2.6(H)m

MH7-23 Building Dimensions:

6.5(L)*3.48(W)*3.2(H)m

Interior Dimensions: 6.3(L)*3.28(W)*2.6(H)m



Architectural Floor Plan



Modular House Combination Model



Exterior Styling



Modular House Combination Model



Interior Design





Other

Outdoor Kitchen Series

Outdoor Kitchen Series



Exterior Styling





OUR Projects

Rendered Designs & Built Projects

Fujian Gutian Project Rendering



Guangdong Shantou Project Rendering



Fujian Longyan Project Rendering



Inner Mongolia Project Rendering



Completed Project in Phuket, Thailand



Completed Project in Datong, Shanxi



Completed Project in Nansha, Guangdong



Completed Project in Ezhou, Hubei



Completed Project in Conghua, Guangdong



Completed Project in Paizi Mountain, Guangdong



Completed Project in Zhangjiajie, Hunan





Capsule Home